

EURO PLUS - EMF 18

12V-18AH - AGM MONOBLOCK VRLA BATTERY

Applications:

- UPS
- Data Centers
- Emergency Lighting
- Security Systems
- Medical Instruments

Features:

- Suitable for High Rate Discharge
- Self Regulating pressure valve
- Flame retardant ABS/PP case
- Product Performance Complies with JIS 8702 C
- Design life 8 Years

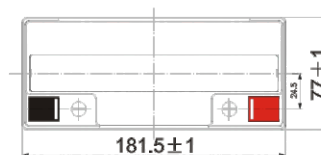
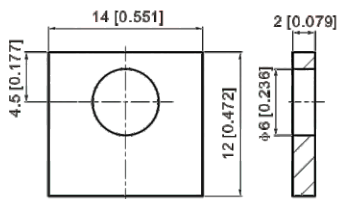
Cells Per Unit	6
Voltage Per Unit	12
Capacity	18Ah @ C ₂₀ upto 175ECV @27°C
Weight	5.4 Kgs
Maximum Discharge Current(1 min 1.60 ECV)	54AMP
Operating Temperature Range	-5°C~+40°C
Nominal Operating Temperature	27°C
Float Charging Voltage	13.5 to 13.8 V
Recommended Maximum Charging Current Limit	5AMP
Equalization and Cycle Service	14.2 to 14.8 V
Self Discharge	Batteries can be stored for more than 6 months @ 27°C Please charge batteries before using. For higher temperatures the time interval will be shorter
Construction	Plate Type: Flat Pasted Seperator: AGM Electrolyte: Immobilised H ₂ SO ₄
Terminal	F3
Container & Cover Material	ABS

Dimensions : Length ± 5 mm Width ± 5 mm Height ± 5 mm

Battery 182 77 168

■ F3 Terminal

Unit: mm [inches]



Constant Current Discharge Characteristics : Amps (27°C)

FV	5mins	10mins	15mins	20mins	30mins	45mins	1hr	2hr	3hr	4hr	5hr	6hr	8hr	10hr	20hr
1.85V/cell	33.9	25.6	22.7	19.9	15.3	11.4	9.11	5.51	4.13	3.35	2.84	2.47	1.96	1.63	0.884
1.80V/cell	40.8	30.2	25.9	22.1	16.7	12.2	9.79	5.85	4.34	3.51	2.94	2.55	2.02	1.67	0.900
1.75V/cell	45.8	33.0	27.8	23.4	17.4	12.8	10.2	6.07	4.49	3.60	3.03	2.62	2.06	1.70	0.918
1.70V/cell	49.9	35.4	29.7	24.7	18.1	13.2	10.6	6.27	4.63	3.69	3.09	2.67	2.09	1.72	0.929
1.65V/cell	53.8	37.7	31.1	25.8	18.9	13.8	10.9	6.44	4.73	3.77	3.14	2.71	2.12	1.74	0.938
1.60V/cell	57.9	39.6	31.9	26.4	19.3	14.0	11.1	6.59	4.82	3.84	3.20	2.74	2.15	1.76	0.945

Constant Current Discharge Characteristics : Watts (27°C)

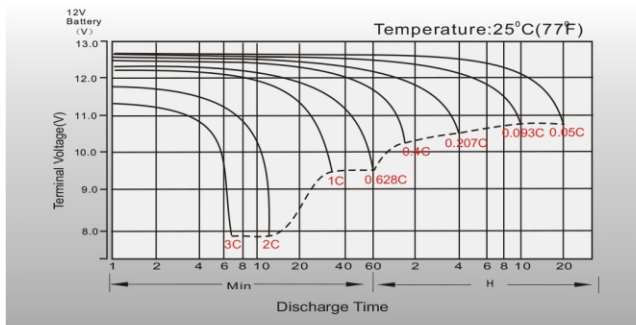
FV	5mins	10mins	15mins	20mins	30mins	45mins	1hr	2hr	3hr	4hr	5hr	6hr	8hr	10hr	20hr
1.85V/cell	64.0	48.8	43.6	38.5	29.8	22.3	17.9	10.9	8.21	6.68	5.68	4.95	3.95	3.29	1.79
1.80V/cell	76.3	57.2	49.5	42.7	32.4	23.9	19.2	11.5	8.59	6.98	5.86	5.09	4.04	3.36	1.81
1.75V/cell	84.8	62.0	52.8	44.8	33.6	24.9	20.0	11.9	8.87	7.14	6.02	5.21	4.11	3.39	1.82
1.70V/cell	91.1	65.6	55.7	46.8	34.7	25.6	20.6	12.2	9.06	7.25	6.08	5.27	4.15	3.42	1.83
1.65V/cell	96.6	68.8	57.5	48.4	35.8	26.3	21.0	12.5	9.19	7.35	6.15	5.32	4.18	3.43	1.84
1.60V/cell	101.5	70.8	58.0	48.7	36.0	26.5	21.3	12.7	9.31	7.45	6.22	5.33	4.21	3.45	1.85

EURO PLUS - EMF 18

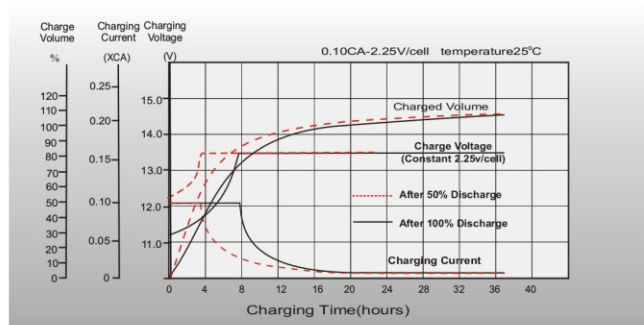
12V-18AH - AGM MONOBLOCK VRLA BATTERY

PERFORMANCE CHARACTERISTICS

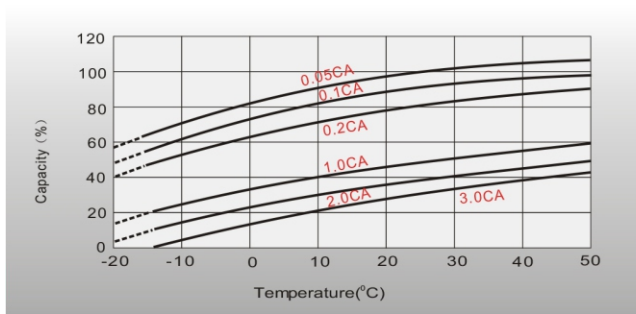
DISCHARGE CHARACTERISTICS



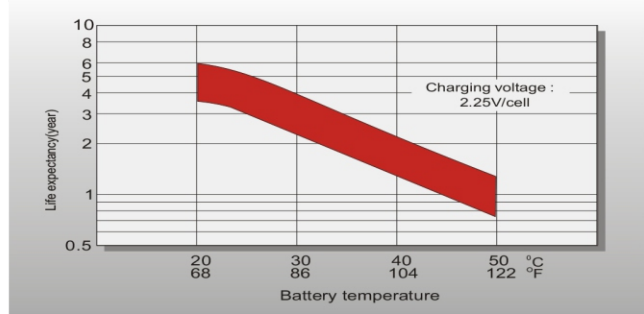
FLOAT CHARGING CHARACTERISTICS



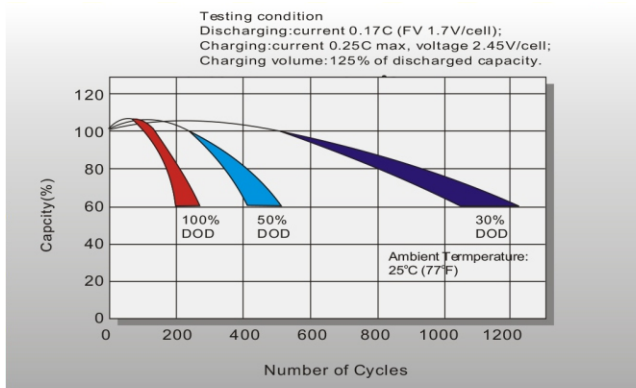
TEMPERATURE EFFECTS IN RELATION TO BATTERY CAPACITY



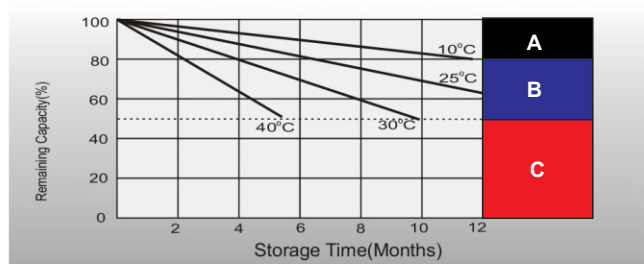
TEMPERATURE EFFECTS ON LONG TERM FLOAT LIFE



CYCLE LIFE IN RELATION TO DEPTH OF DISCHARGE



SELF DISCHARGE CHARACTERISTICS



- A** No supplementary charge required
(Carry out supplementary charge before use if 100% capacity is required.)
- B** Supplementary charge required before use. Optional charging way as below:
1. Charged for above 3 days at limited current 0.25CA and constant voltage 2.25V/cell.
2. Charged for above 20 hours at limited current 0.25CA and constant voltage 2.45V/cell.
3. Charged for 8-10 hours at limited current 0.05CA.
- C** Supplementary charge may often fail to recover the capacity.
The battery should never be left standing till this is reached.